

HDS-5m & HDS-7m

Quick Start Guide



Function keys

HDS works very much like previous Lowrance products but there are some changes that make it even easier to use. Read this guide to quickly familiarize yourself with your new display. For more details on any of the features mentioned here consult the user's manual.



Arrow Keypad Activates cursor on Chart page. Press up, down, left or right to move the cursor.

ZOUT Zooms out the Radar, Sonar and Chart pages.

ZIN Zooms in the Radar, Sonar and Chart pages.

EXIT Press to return to a previous screen, clear data and close menus. Pressing *Exit* on the Chart page will quickly switch between displaying the boat symbol and the last cursor position.

ENTER Press to save data, change values and accept menu commands; also acts as a short cut key for important functions such as saving a waypoint at the cursor position on the Chart page.

MENU Accesses the features available on each page.

PAGES Press to select the page (screen) to display or to access utilities such as the waypoints list and celestial table. Press and hold to switch control between the panels and combo (split screen) pages.

WPT FIND Press to save a waypoint at your current GPS position. Press and hold to search for waypoints and other points of interest (POI's) or quickly access waypoints, routes and trails..

LIGHT POWER Press to turn the unit on, adjust the backlight or place the unit in low power (standby) mode. Press and hold to turn the unit off.



Creating a Man Overboard (MOB) position:

- Press the **ZOUT** and **ZIN** keys at the same time to create a MOB waypoint with a line to your boat position.

Pages screen

To view a page:

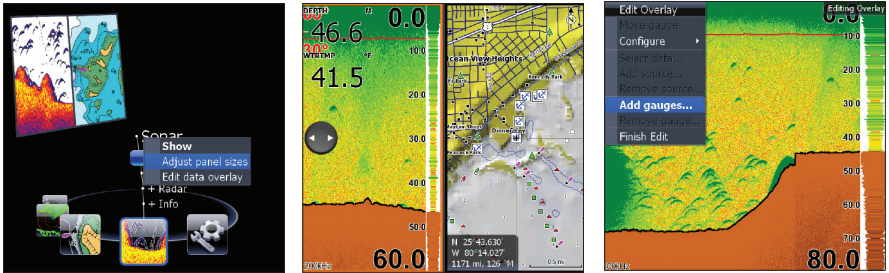
1. From any screen press **PAGES** to access the Pages screen.
2. Select the page display. Chart / Sonar will display a Chart and Sonar combo page.

To adjust Panel sizes on a Combo page:

1. From the Pages screen select the Combo page option you want to view, press the **MENU** key. Select *Adjust panel sizes*. Use the on screen button to adjust the panel size.

To add a Data or Gauge overlay to a page:

1. From the Pages screen select the page you want to add or Edit data display for, press the **MENU** key. Select *Edit data overlay*.
2. When the page appears press **ENTER** to add data or **MENU** to access options, or follow the on screen instructions.



MMC / SD card slot

The MMC card slot door has a magnetic latch. Insert cards face up. Always use care when inserting MMC cards. Forcing cards into the slot could cause damage. Make sure the MMC card slot door is always closed. This will help to prevent moisture from getting into the card slot compartment.



Waypoints

To Create Waypoint at current position:

1. Press the **WPT/Find** key to create a waypoint at the your current position.

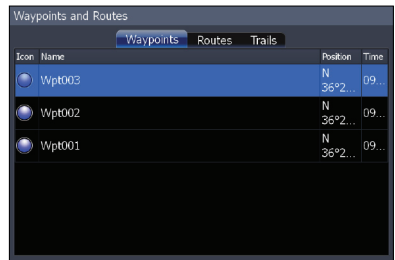
To Create Waypoint at the Cursor position on Chart page:

1. Place the cursor on the Chart page where you want to set the waypoint, press the **ENTER** key. The New Waypoint menu will appear.
2. Select *Save* from the New Waypoint menu.



Waypoints screen

To view stored waypoints go to the Waypoints screen in the Utilities page. From the Waypoints screen you can view and edit stored waypoints.



Go To Cursor / Cancel Navigation

To Navigate to a Point of Interest on the Chart page:

1. From the Chart page, center the cursor over a point of interest. Press the **MENU** key. The Chart menu will appear.
2. From the Chart menu select *Go to Cursor*, press **ENTER**. The unit will begin navigating to the cursor position on the Chart page.



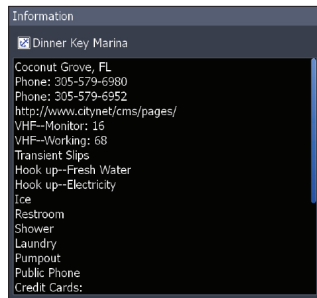
To stop Navigating to a Point of Interest or any other destination:

1. From the Chart menu select *Navigation* and press **ENTER**.
2. Highlight and select *Cancel* from the submenu. To reset your cross-track (of course) error, select *Restart Navigation* from the submenu.

Chart POI information

To view POI information on the Chart page:

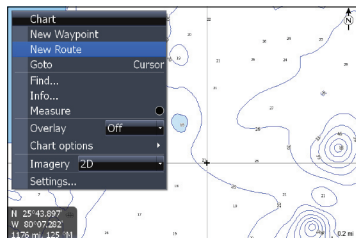
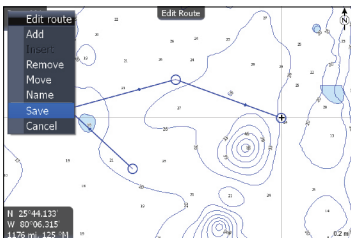
1. Select a POI on the Chart page with the cursor. A pop-up box will appear identifying the POI. Press the **MENU** key. The Chart menu will appear.
2. Select Info from the Chart menu, press **ENTER**. The Chart Info screen will appear.
3. To view additional information about the POI, select *Details*. The Information screen will appear.



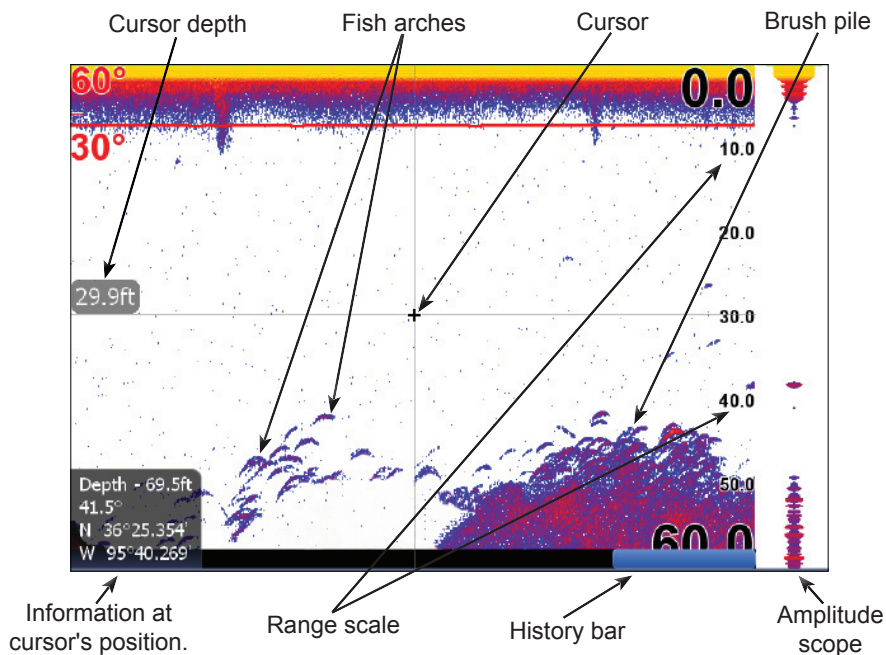
Routes

To create a Route from the Chart page:

1. Press the **MENU** key and select *New Route* from the Chart menu. Press **ENTER**.
2. Follow the on screen instructions.
3. Press the **MENU** key to open the Edit route menu. Select *Save* and press **ENTER**. The route will be saved to the Routes screen.
4. From the Routes screen highlight the route and select *Start*. The Start Route message box will appear, select either *Forward* or *Reverse*.



Sonar : (Available only when connected to a Sonar or Sonar/GPS unit via Ethernet cord.)



When the cursor is active on screen use the History bar to scroll the Sonar page back and view previous sonar returns. When the cursor is on screen the sonar does not show real time sonar returns.



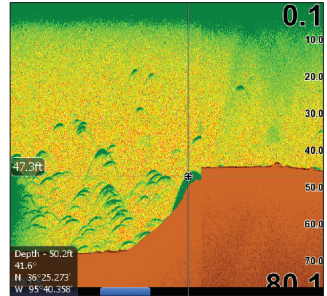
NOTE: The unit is set up for optimal automatic operation under most conditions. For use in thick weeds or very deep water, and a number of other fishing situations, a range of special Fishing Mode settings are available. Consult the user's manual for more details.

To adjust Sensitivity and Colorline:

1. From the Sonar page press the **MENU** key. The Sonar menu will appear. From the Sonar menu select *Adjust*.
2. The Sensitivity adjustment menu will appear. Use the left and right arrows to make adjustments.
3. To adjust Colorline use the up or down arrows to select the Colorline menu. Use the left or right arrows to make adjustments.

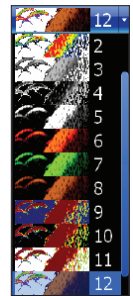
To mark an Underwater object with a Waypoint:

1. From the Sonar page, press the Arrow keypad to activate the cursor. Use the Arrow keypad to center the cursor over the underwater object, press **ENTER**. A waypoint will be created at the cursor's position on the Sonar page. The waypoint can be viewed from either the Waypoints screen or the Chart page.



To select a Sonar page Palette:

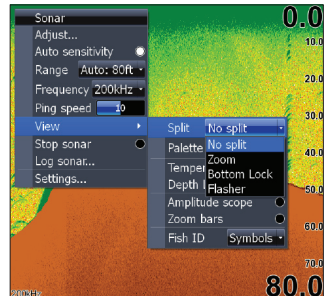
1. From the Sonar page press the **MENU** key. The Sonar menu will appear. Select *View* in the Sonar menu to open the View submenu.
2. From the View submenu select *Palette*. The Palette menu has 12 sonar screen categories, including Grayscale, Nightview and Iceview.



Sonar page Split screen options

To select a Zoom, Bottom Lock or Flasher split screen display:

1. From the Sonar page press the **MENU** key. The Sonar menu will appear. Select *View* in the Sonar menu to open the View submenu.
2. From the View submenu select *Split* to open the Split (screen) menu. The Split screen options are: *No split*, *Zoom*, *Bottom Lock* and *Flasher*.



To view and control two Frequencies at once:

1. Press **PAGES** to access the Pages screen. From the Pages screen Sonar options select + *Sonar* combo pages.

